

PHILIPS

Micro Music System

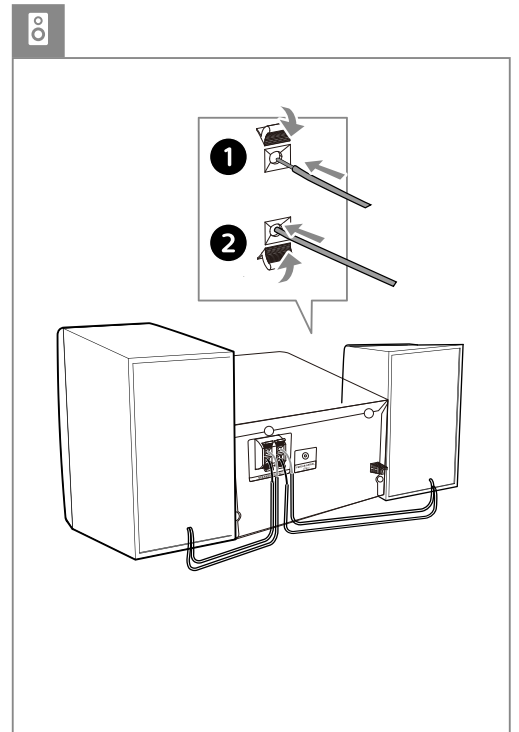
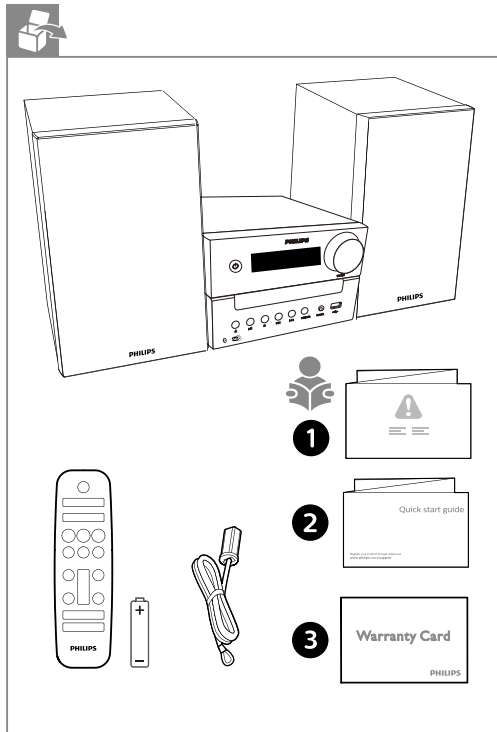
3000 Series

M3505

Quick Start Guide



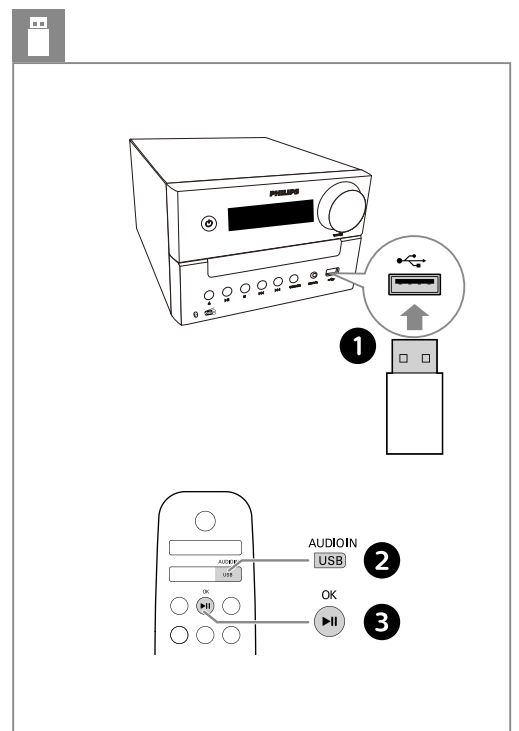
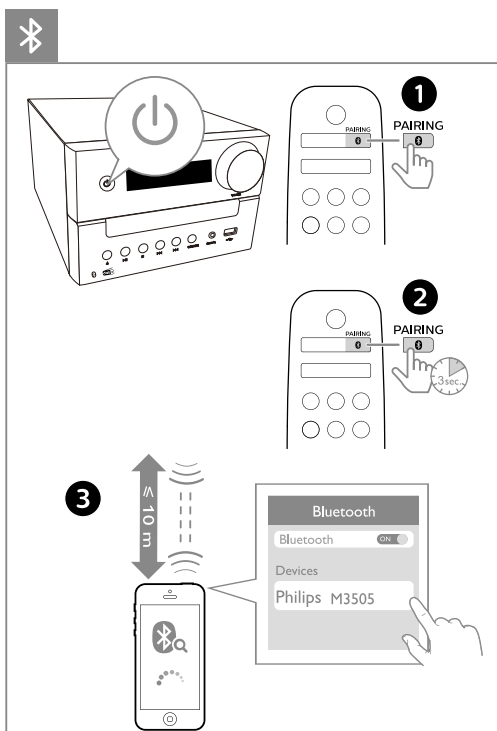
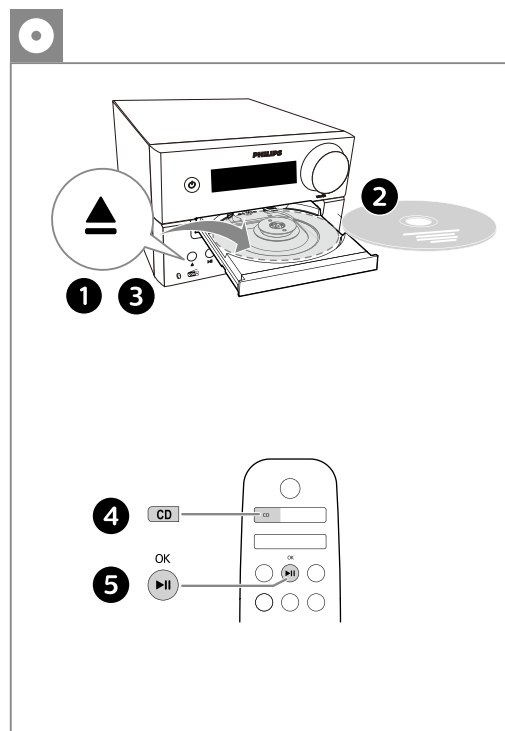
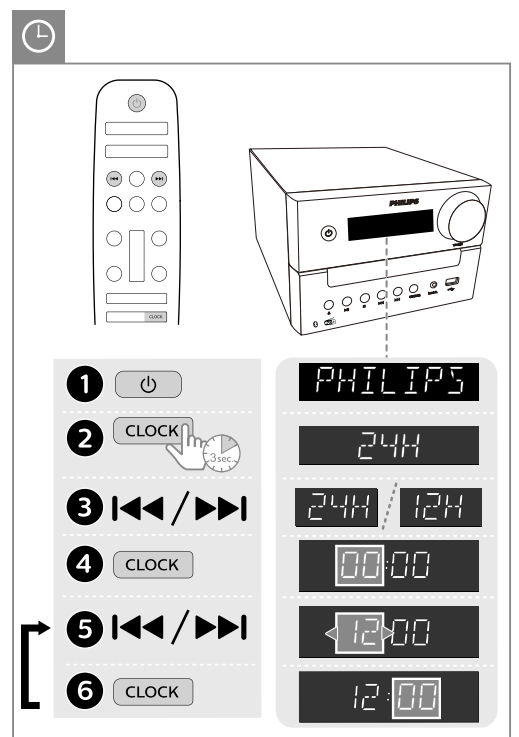
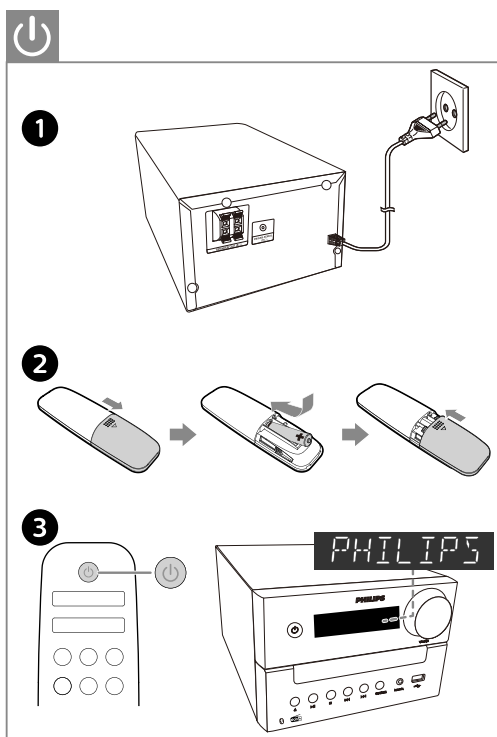
Register your product and get support at www.philips.com/support



Philips and the Philips Shield Emblem are registered trademarks of Koninklijke Philips N.V. and are used under license.

This product has been manufactured by and is sold under the responsibility of MMD Hong Kong Holding Limited or one of its affiliates, and MMD Hong Kong Holding Limited is the warrantor in relation to this product.

M3505_12_QSG_V1.0



Antenna Connection: Connect the external antenna to the antenna terminal on the back of the unit.

Scanning Steps:

- 1** Press **FM** or **DAB** on the remote control.
- 2** Press **A** or **B** with the left arrow key to start scanning.
- 3** Press the up/down arrow keys to select a station.

The display will show **DAB**, **FM**, **PO1**, or **PO3** as stations are found.

Sleep Timer Settings:

- Press **SLEEP** on the remote control.
- The display will cycle through the following options: **120 MIN**, **90 MIN**, **60 MIN**, **30 MIN**, **15 MIN**, and **OFF**.

Sleep Timer Activation:

- Press the power button.
- Press **SLEEP** on the remote control.
- Press the left arrow key to activate the timer.
- The display shows the timer set to **08:00**.

Usage:

- Press the left arrow key to skip forward.
- Press **SLEEP** on the remote control.
- Press the left arrow key to skip forward.
- Press **SLEEP** on the remote control.

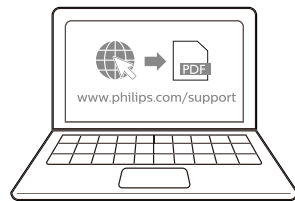
The display will show **08:30**, **FM**, **DISC**, **VOL 3**, and **TIMER ON**.

External Audio Connection:

- Connect the audio source (e.g., smartphone) to the **AUDIO IN** port on the back of the unit.
- Connect the audio cable to the **AUDIO IN** port on the front of the unit.

USB Connection:

- Connect the USB device (e.g., smartphone) to the **USB** port on the front of the unit.
- Connect the power cable to the power input on the back of the unit.



www.philips.com/support