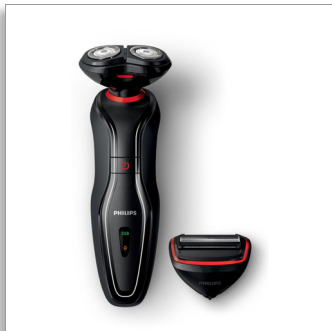




Philips Click & Style
shave & groom

2-in-1 tool

40 min cordless use/1h charge
ComfortCut Blade System



S728/17

One tool, any look

Get a smooth face and a groomed body really easily with this 2-in-1 tool. It has two separate attachments: for shaving and grooming. Just choose the one you want, click it onto the handle and get going.

Easy to use

- SmartClick system for easy click-on/off attachments
- Choose between 2 click-on/off attachments to get your look
- The handle and bodygroom attachment are water resistant
- 40 minutes battery use after 1-hour charge
- Indicates when battery is low, charging or full
- 2-year guarantee, worldwide voltage and replaceable blades

Smooth face

- For extra skin protection, use with shaving cream
- A close and safe shave

Groomed body

- Easy and safe body hair trimming and shaving



asimpleswitch.com

PHILIPS

Shave & groom
2-in-1 tool 40 min cordless use/1h charge, ComfortCut Blade System

S728/17

Highlights

SmartClick System



The SmartClick attachment system makes it easy to turn your Click&Style into a shaver or bodygroom. Just click the attachment you need onto the handle to complete your style.

Click-on/click-off attachments



Just click the attachment you need onto the handle to turn it into a shaver or bodygroom. Click it off again when you've finished. For a smooth face, choose the shaver. Want a sleek body? Time for the bodygroom. One tool, any look.

Smooth shave



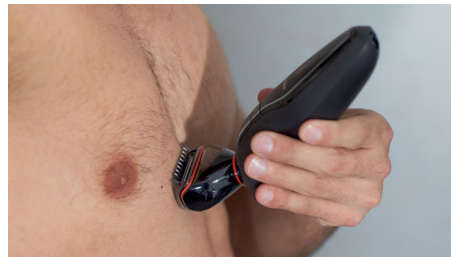
Shave wet with shaving cream for extra skin protection, or dry for convenience.

Smooth face



The dual rotary shaving attachment is designed for a close and clean shave with no nicks and cuts. The shaving heads move in 3 directions to easily follow your face's curves.

Groomed body



Rounded combs and patented pearl tips prevent skin irritation for reliably smooth grooming all over your body.

Water resistant



Comfortably trim and shave all your body hair, under the shower if you prefer.

Quick 1-hour charge

NiMH
40 minutes

Up to 40 min of cordless power after only 1 hour of charging.

Battery light



The battery light goes on to show when the battery is low, charging or is fully powered up.



asimpleswitch.com

Philips Green Logo

Philips Green Products can reduce costs, energy consumption and CO2 emissions. How? They offer a significant environmental improvement in one or more of the Philips Green Focal Areas – Energy efficiency, Packaging, Hazardous substances, Weight, Recycling and disposal and Lifetime reliability.

Specifications

Shaving Performance

- Shaving system: ComfortCut Blade System

Accessories

- SmartClick: Body groomer
- Maintenance: Protective cap
- Usage: Bodygroom comb

Ease of use

- Display: Battery light
- Cleaning: Fully washable
- Operation: Cordless use

Design

- Handle: Anti-slip grip, Easy grip

Power

- Automatic voltage: 100-240 V
- Battery Type: NiMH
- Charging: 1 hour full charge, Quick charge for 1 shave
- Run time: Up to 40 minutes

Service

- 2-year guarantee
- Replacement head: Replace every 2 yrs with SH30



Issue date 2016-05-31

Version: 9.2.1

© 2016 Koninklijke Philips N.V.
All Rights reserved.

Specifications are subject to change without notice.
Trademarks are the property of Koninklijke Philips N.V.
or their respective owners.

www.philips.com