

Instant Film
instax mini

There are so many film border designs to choose from!



Accessories (sold separately)

Camera Cases



Albums



instax.com



FUJIFILM

FUJIFILM Corporation
7-3, AKASAKA 9-CHOME, MINATO-KU,
TOKYO 107-0052, JAPAN

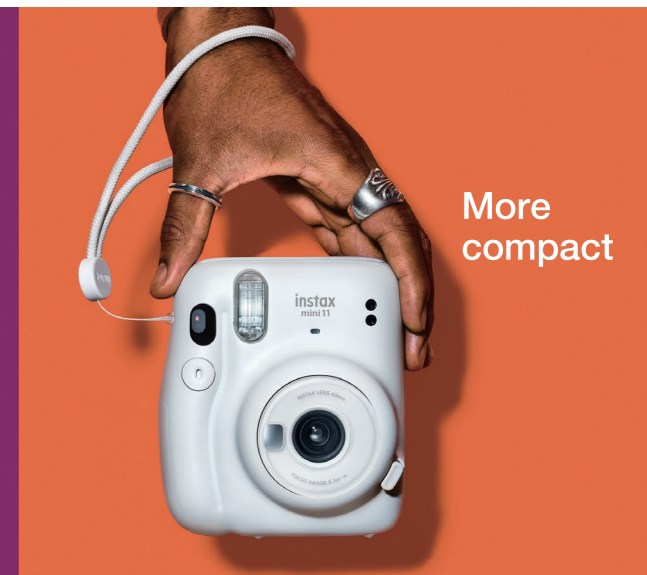
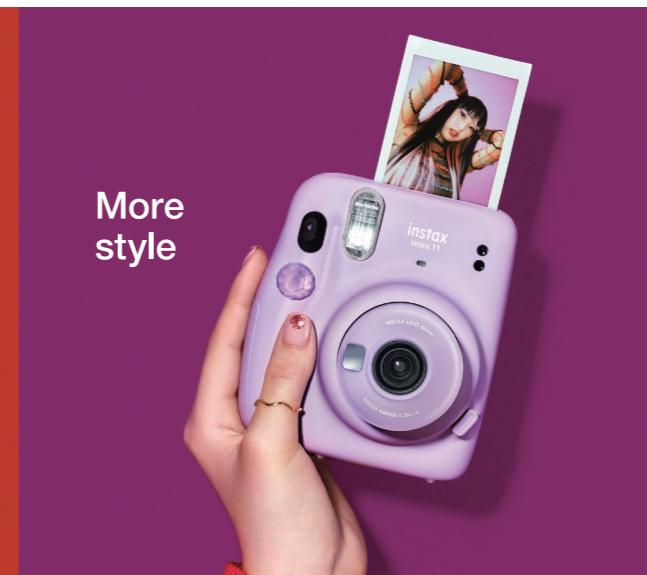
Specifications

| | |
|----------------------|---|
| Film | FUJIFILM instax mini instant film |
| Photo Picture Size | 62 mm x 46 mm |
| Lens | 2 components, 2 elements, f = 60 mm, 1:12.7 |
| Viewfinder | Real image finder, 0.37x, with target spot |
| Shooting Range | 0.3 m and beyond (use selfie mode for 0.3 m to 0.5 m) |
| Shutter | Programmed electronic shutter 1/2 to 1/250 sec. Slow synchro for low light |
| Exposure Control | Automatic, Lv 5.0 to 14.5 (ISO 800) |
| Film Ejection | Automatic |
| Film Developing Time | Approx. 90 seconds (varies depending on the ambient temperature) |
| Flash | Constant firing flash (automatic light adjustment), recycle time: 6.5 seconds or less (when using new batteries), effective flash range: 0.3 to 2.7 m |
| Power Supply | Two AA-size alkaline batteries (LR6), capacity: approx. 10 instax mini film packs of 10 exposures each |
| Auto Power Off Time | After 5 minutes |
| Other | Includes film counter and film pack confirmation window |
| Dimensions | 107.6 mm x 121.2 mm x 67.3 mm |
| Weight | 293 g (without batteries, strap, and film) |

- The instax prints depicted are for illustrative purposes only.
- Specifications are subject to change without notice.
- Due to the nature of the catalog's printing, colors may appear slightly different from the actual products.

FUJIFILM
Value from Innovation

instax



Now even more ways to give.
The new **instax mini 11**
don't just take, give.



instax mini 11

Instant Camera

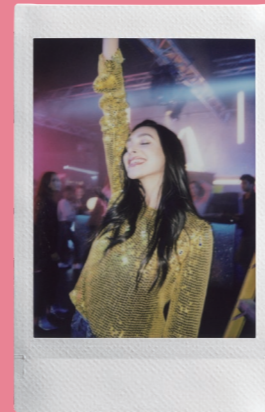


Now It's Easy to Get Bright Photos Anywhere!

The high-performance flash automatically calculates surrounding brightness and adjusts shutter speed accordingly — no need for any special settings.

other instax mini cameras

The light of the flash does not reach the background, resulting in a dark-looking photo.



Brighter Backgrounds

instax mini 11

mini 11 captures bright backgrounds and bright subjects even in dark scenes.



Selfies & Close-Ups Never Looked Better!

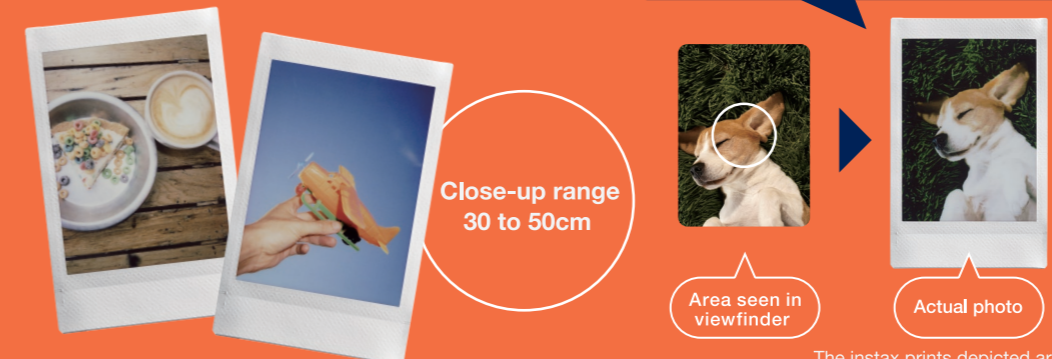
Simply pull out the lens to instantly switch to Selfie Mode!



Capture a perfect Close-Up!

Use Selfie Mode to shoot a subject 30 to 50cm away so you can get a clear close-up shot everytime.

There's a slight shift between the viewfinder and the actual photo during close-ups. Here's a tip: Aim just a little to the right of your subject for best results.



The instax prints depicted are for illustrative purposes only.



Customize Your Camera

Two shutter button accessories and a strap are included.

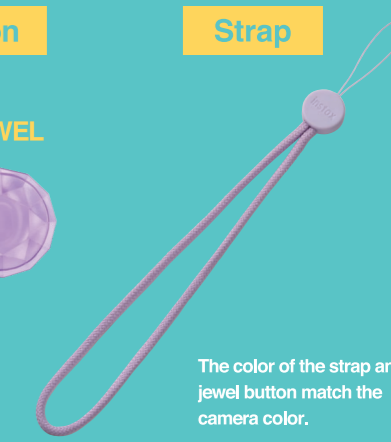
Shutter Button Strap

GLOW



Glows in the dark!

JEWEL



The color of the strap and jewel button match the camera color.

